

臺中/清泉崗機場 TAICHUNG/CINGCYUANGANG AD

RCMQ
RNP RWY36

TAIPEI APP 130.1 129.6	TAICHUNG TWR 118.75 120.25	ATIS 127.75
---------------------------	-------------------------------	----------------

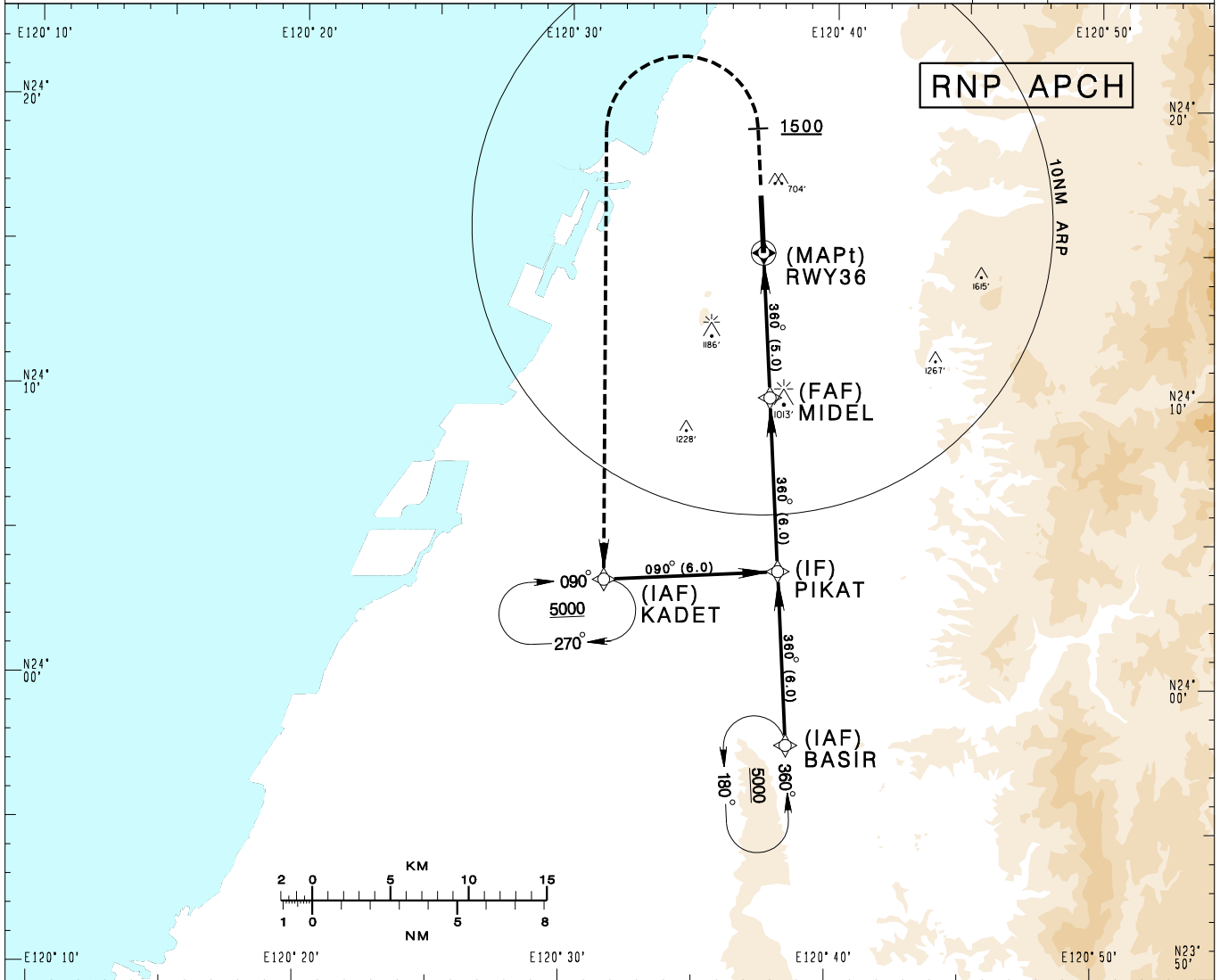
Apt Elev: 665' Rwy36 THR Elev: 663' Trans Level: FL130 Trans Alt: 11,000'

BEARINGS ARE MAGNETIC; DISTANCES ARE NAUTICAL MILES; ELEVATIONS, HEIGHTS IN FEET

VAR 4° W

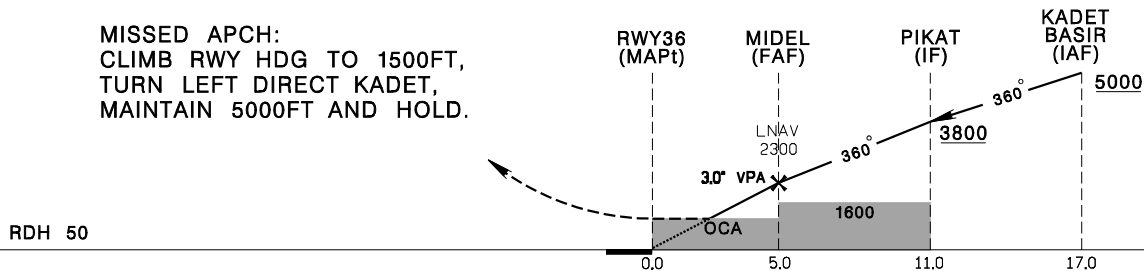
13600'

MSA ARP 25NM



DIST (NM) to THR 36	1.1	2	3	4	5
DIST (NM) to Next WPT	1.1	2	3	4	MIDEL
ADVISORY ALT	1070	1350	1670	1990	2300

MISSED APCH:
CLIMB RWY HDG TO 1500FT,
TURN LEFT DIRECT KADET,
MAINTAIN 5000FT AND HOLD.



MINIMA (OCA IN FT, VIS IN M, OCH IN FT)

CATEGORY		A	B	C	D
LNAV/VNAV	STRAIGHT IN	1040/1000 RVR1000 377	1040/1000 RVR1000 377	1040/1000 RVR1000 377	1040/1000 RVR1000 377
	STRAIGHT IN (ALS OUT)	1040/1700 377	1040/1700 377	1040/1700 377	1040/1700 377
LNAV	STRAIGHT IN	1060/1200 RVR1200 395	1060/1600 395	1060/1600 395	1060/1600 395
	STRAIGHT IN (ALS OUT)	1060/1700 395	1060/1700 395	1060/1800 395	1060/1800 395

NOTE
1. CAUTION CLOSE-IN OBSTACLES (TREES) 704FT MSL, 150M NORTHEAST OF THR 18.
2. BARO-VNAV NOT AUTHORIZED BELOW 0° C.

CHANGES: NEW PAGE NUMBER